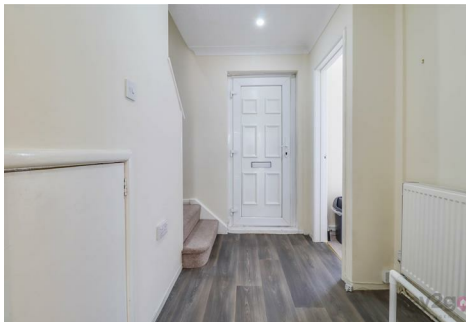


Marketing Preview



5 Oak Close, Killamarsh, Sheffield, S21 1FB

£160,000

Bedrooms 2, Bathrooms 1, Reception Rooms 1



CHAIN FREE! A fantastic opportunity to acquire this spacious end-terrace home, ideally tucked away in the corner of a quiet cul-de-sac. Offering two double bedrooms and beautifully presented throughout, the property boasts a stylish kitchen, low-maintenance garden, and is ready to move into. Conveniently located close to local village amenities.

SUMMARY

CHAIN FREE! A fantastic opportunity to acquire this spacious end-terrace home, ideally tucked away in the corner of a quiet cul-de-sac. Offering two double bedrooms and beautifully presented throughout, the property boasts a stylish kitchen, low-maintenance garden, and is ready to move into. Conveniently located close to local village amenities.

A useful entrance hallway with stairs rising to the first floor and a storage cupboard. A door leads to a bright and spacious lounge/diner, featuring a window to the front and sliding patio doors opening to the rear garden. The kitchen is positioned to the rear and fitted with modern wall and base units, with a uPVC door providing access to the garden.

To the first floor are two generous double bedrooms, both benefitting from built-in storage, along with a family bathroom.

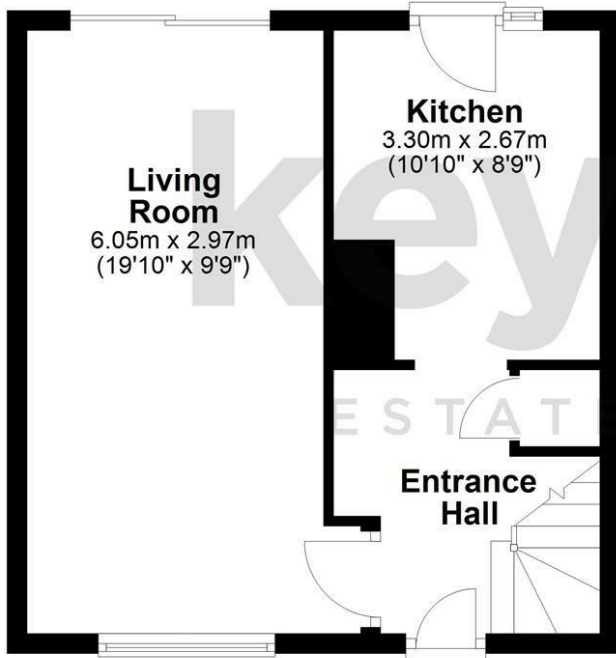
To the rear is a low-maintenance garden with a patio, decorative pebbled area, and artificial lawn, enclosed by fencing and benefitting from two useful brick built outbuildings.

PROPERTY DETAILS

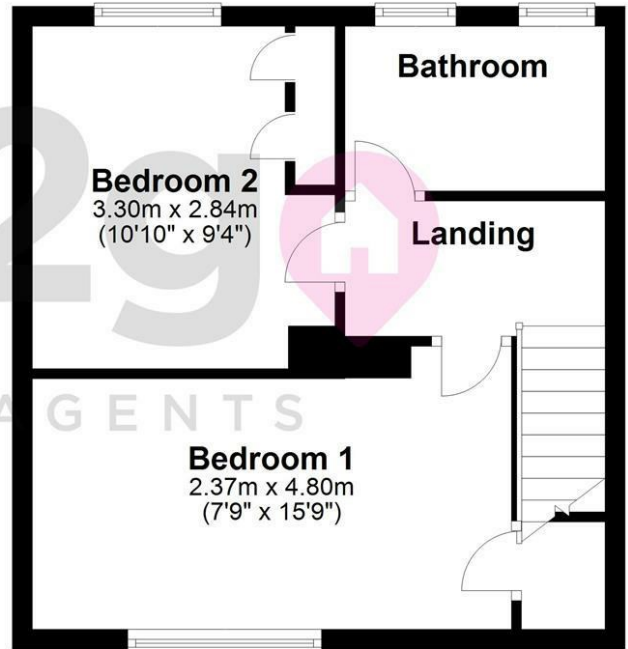
- FREEHOLD
- FULLY UPVC DOUBLE GLAZED
- GAS CENTRAL HEATING
- COMBI BOILER
- COUNCIL TAX BAND A - NORTH EAST DERBYSHIRE COUNCIL

FOR ROOM MEASUREMENTS PLEASE SEE THE FLOORPLAN

Ground Floor



First Floor



Energy Efficiency Rating		
	Current	Potential
Very energy efficient - lower running costs		
(92 plus) A		88
(81-91) B		
(69-80) C		
(55-68) D	63	
(39-54) E		
(21-38) F		
(1-20) G		
Not energy efficient - higher running costs		
England & Wales	EU Directive 2002/91/EC	

